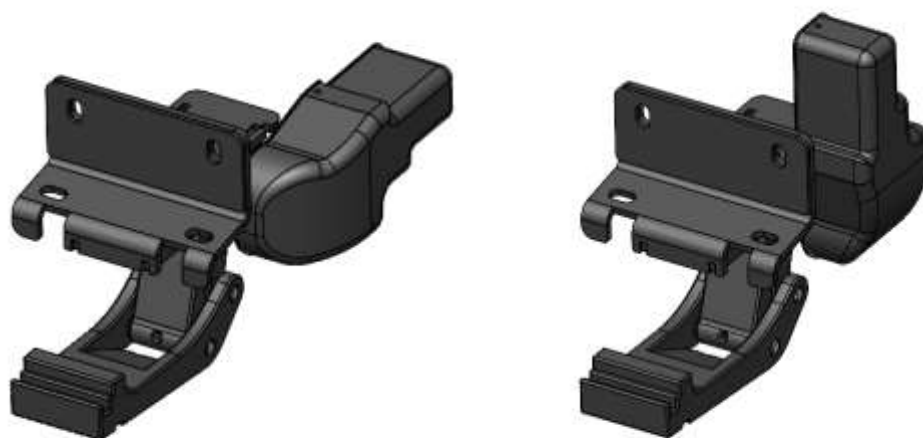




HYUNDAI STARIA

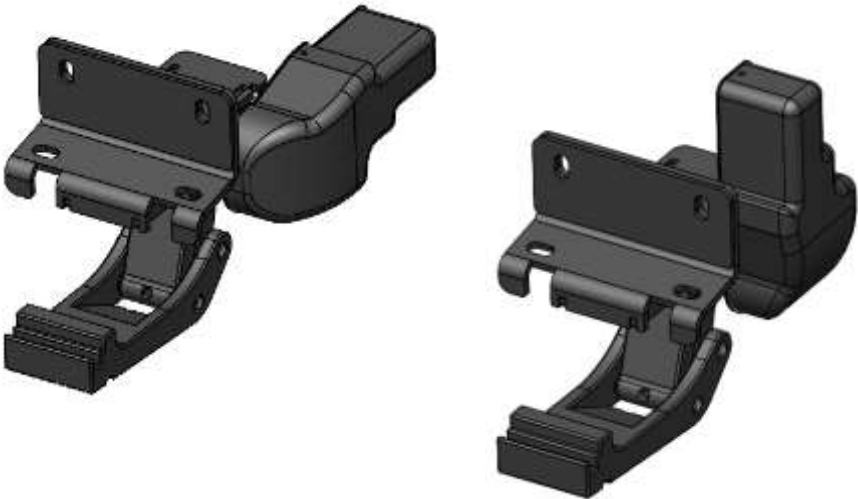




ASSEMBLY TIME
3- 4 HOURS
Professional installation recommended

DIFFICULTY LEVEL

1 2 3 4



- LOADOUT LIST**
- Protective Glasses
 - Cricket wrench and levers
 - Cable scraper
 - Allen Key kit
 - Electrical insulation tape
 - Pliers
 - 13 mm wrench
 - 10 mm wrench
 - Drill
 - 10 mm wrench drill

WARRANTY PERIOD
2 YEARS



Allen Key Set



Cordless Drill Set



Cricket Screw Set



Pneumatic Screw Set



Pneumatic Drill



Pliers Set



Wire Stripping Pliers



Punch Set



Zinc Sprey



Helmet



Security



Caution



Glove



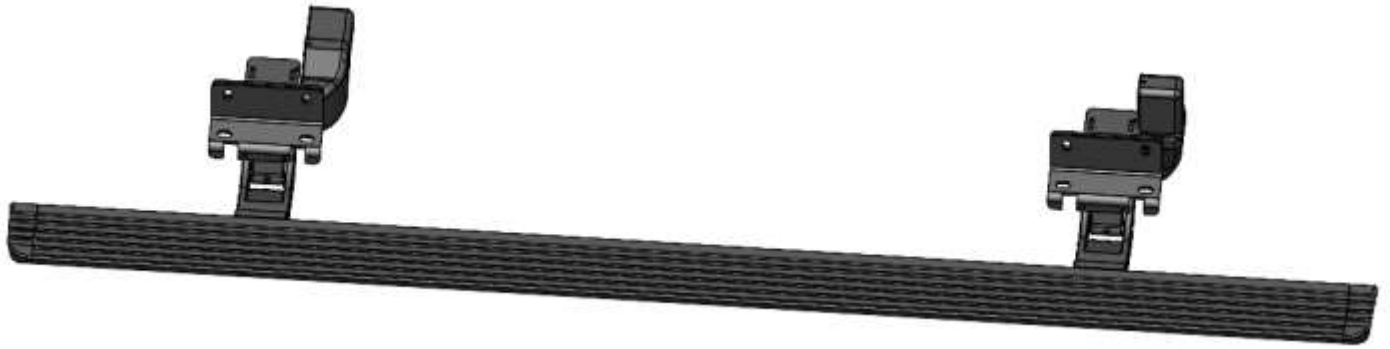
Glass



Restricted



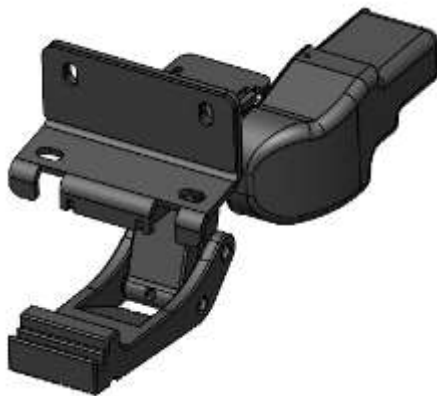
Mask



Hyundai Staria Left v-Board Step



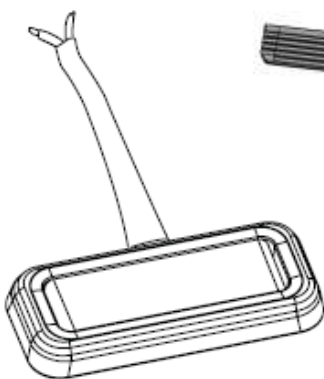
Hyundai Staria Right v-Board Step



Partner Carrier Leg



Rear Left Carrier Leg



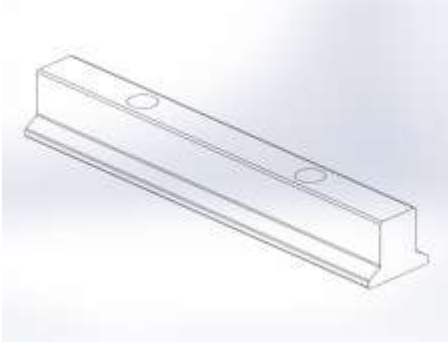
LED



Board



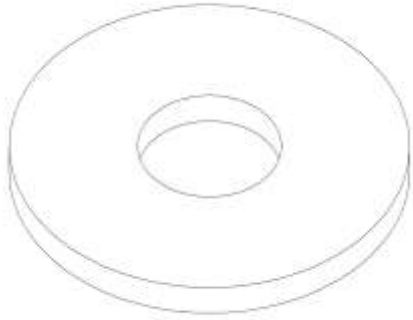
Control Unit



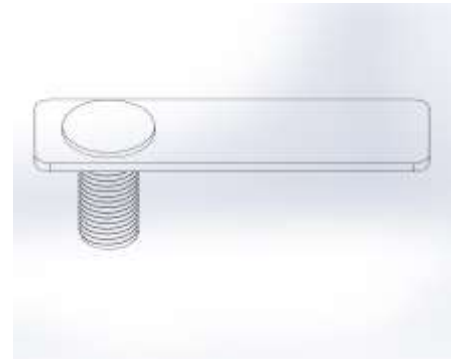
Board profile bracket



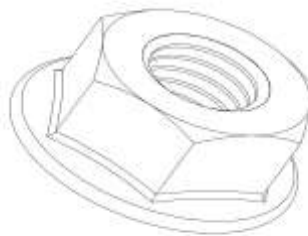
M6 x 20 Imbus Bolt



M8 Washer

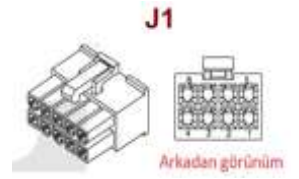
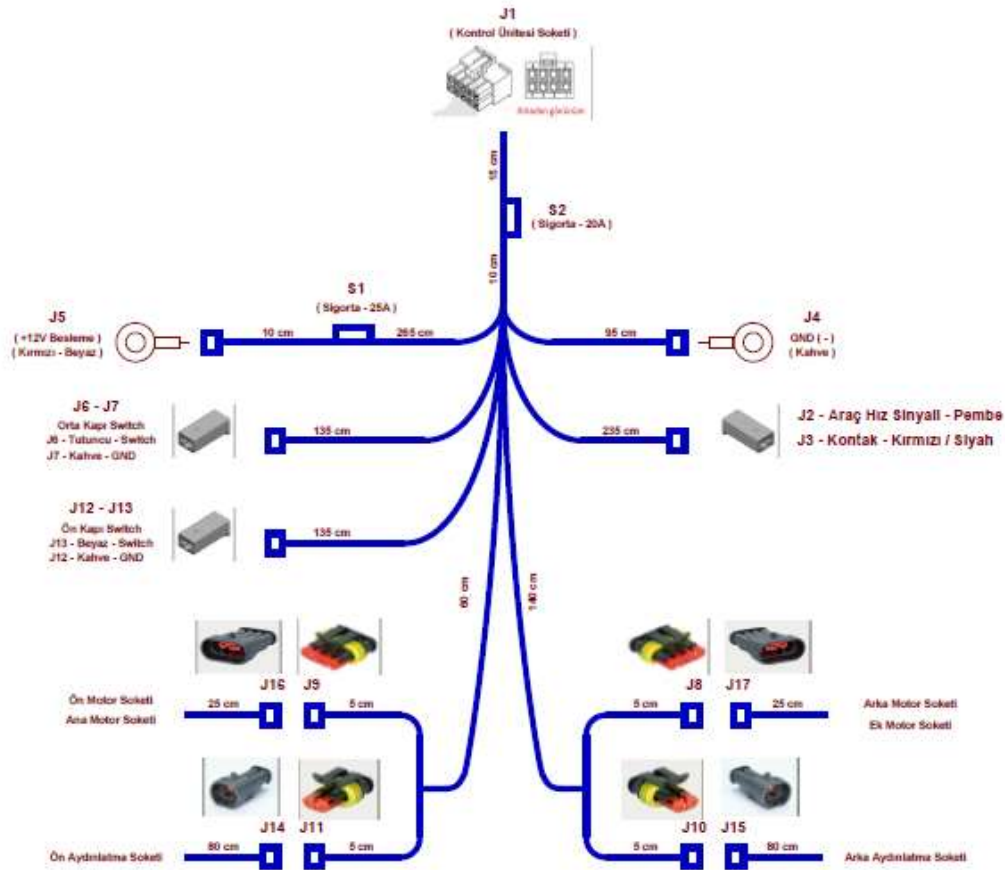


M8 x 30 Connection Bolt

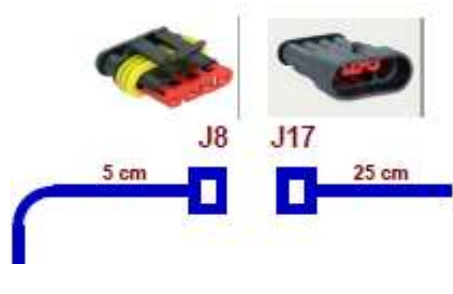


M8 Nut

DUAL MOTOR V - BOARD



On Motor Soketi
Ana Motor Soketi

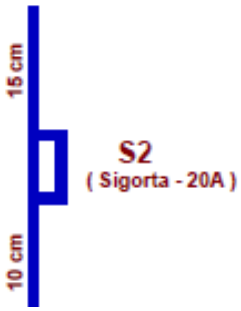


Arka Motor Soketi
Ek Motor Soketi

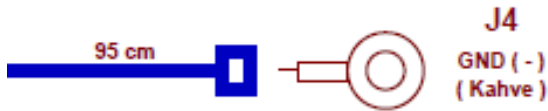
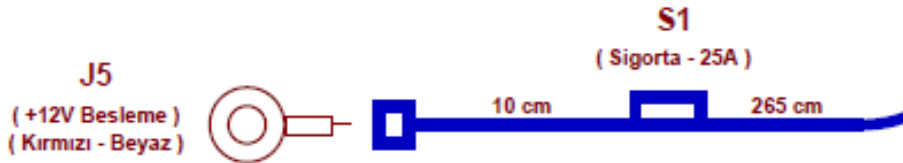
On Aydınlatma Soketi



Arka Aydınlatma Soketi



Fuse 20A



Ignition and Speed information connection.

(*** This connection is optional; not mandatory for v-board to operate.)



Middle Door Switch connection



Front Door Switch connector





LED – 1 connection



LED – 2 connection

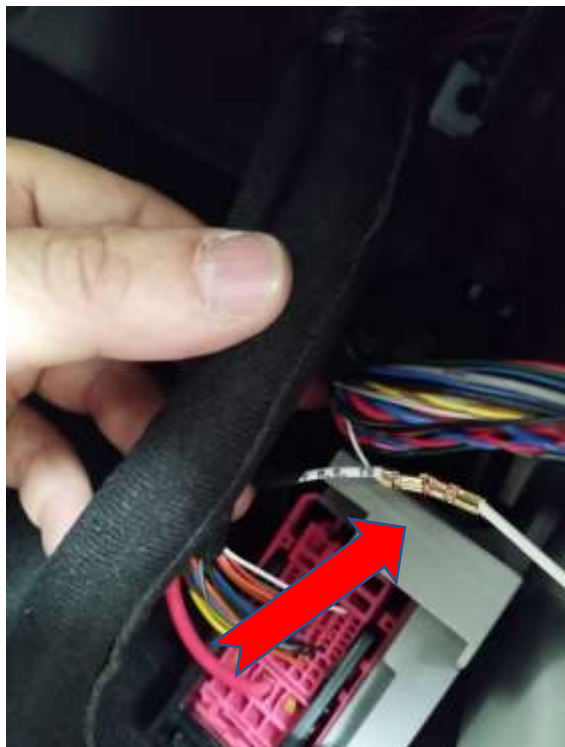


Front Motor Socket



Rear Motor Socket

Electrical connection system for front right door's open and close positions.



The plastic cover that has original signal sockets inside is dismantled which is placed on right front torpede.

1



The white cable which is on v-board installment is connected to the other white cable which is on the original installment of the car seen on left photo. 2

Electrical connections for right rear door's open and close position.



The plastic cover is dismantled that has original signal sockets inside which is placed on right side of sliding door.

3



The orange cable from V-board installment is connected to the grey cable which is from the vehicle's original installment seen on left photo.

4

Electrical connections for front left door's open and close positions.



The plastic cover which has the original signal sockets inside is dismantled. It's located under the left front torpedo..

5



The white cable from V-board installment is connected to the blue cable which is from the vehicle's original installment seen on left photo.

6





Electrical connections for rear left door's open and close positions.



The plastic cover which has the original signal sockets inside is dismantled. It's located on the right side of sliding door.

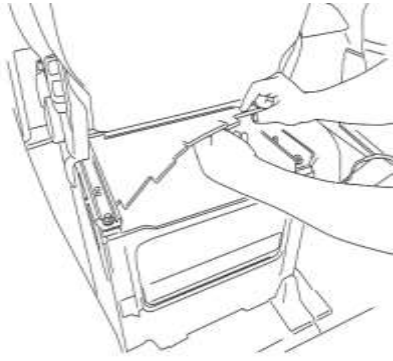
7



The orange cable from V-board installment is connected to the another orange cable which is from the vehicle's original installment switch seen on left photo.

8





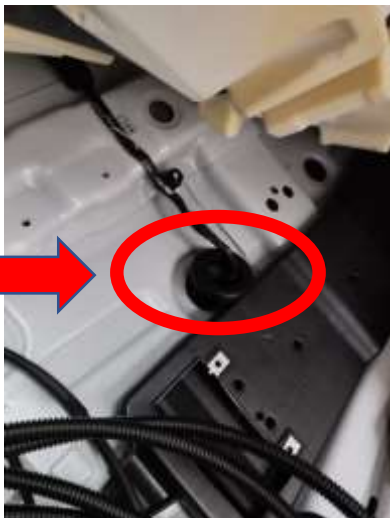
Connection of the wiring and control unit is made in the compartment under the front passenger seat.

9



Wiring connections are made to the vehicle's battery

10



For connections under the vehicle, the wiring is taken to the underside of the vehicle through the hole under the front passenger seat

11





The frame connections of V-board installment seen on left photo is placed on the bottom of right passenger seat.

12



The control unit of V-board installment is taken out from the floor covering.

13



The control units are fixed under the right seat seen on left photo.

14

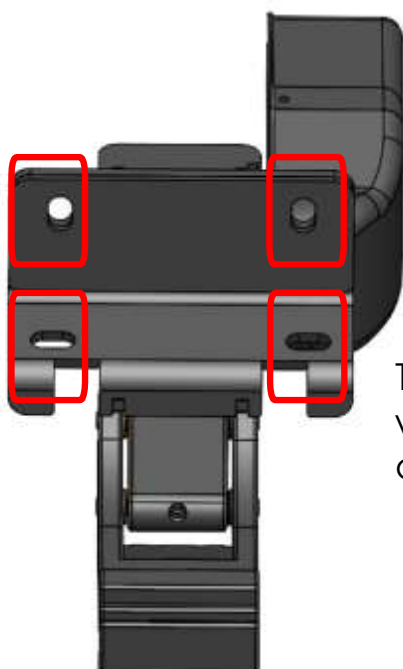




The weighting arm frame common carrier leg (the green point) is referenced for connection of front support

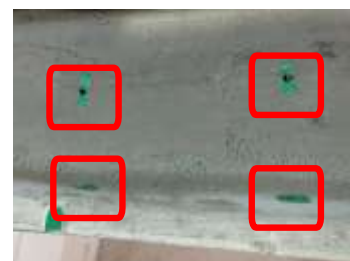


1



Ø 3,5 mm holes are drilled for front carrier frame connection

2



The drilled holes are expanded with punch by **Ø 20 mm** and dyed with zinc spray holes

3



For front carrier frame connection, 4 bolts are inserted to the original frame holes of the vehicle.

4



The front carrier frame's rear connection bolt is seen on the left photo

5

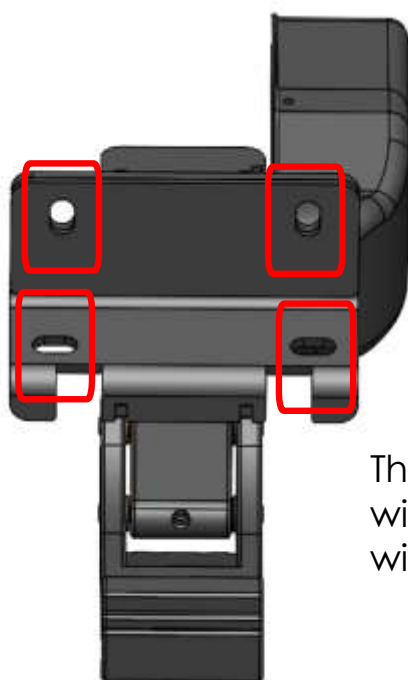




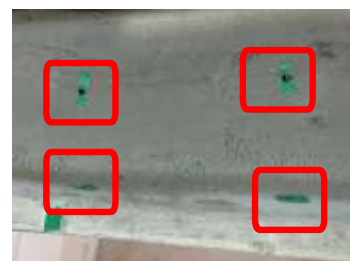
The common carrier leg are inserted by the reference of the green marked points for rear carrier frame connection.



6



Ø 3,5 mm holes are drilled for rear carrier frame connection which are seen on the right photo.



7

The drilled holes are expanded with punch by Ø 20 mm and dyed with zinc spray holes



8



For rear carrier frame connection, 4 bolts are inserted to the original frame holes of the vehicle.



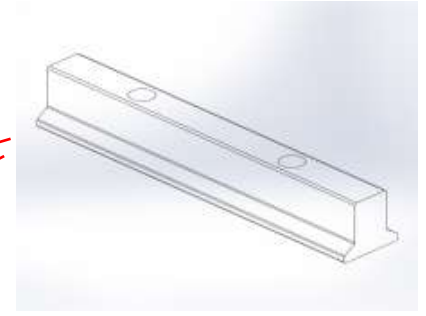
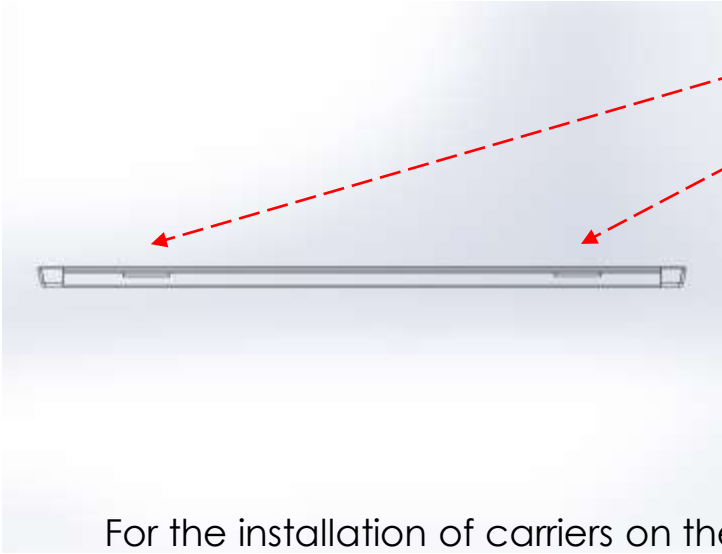
9



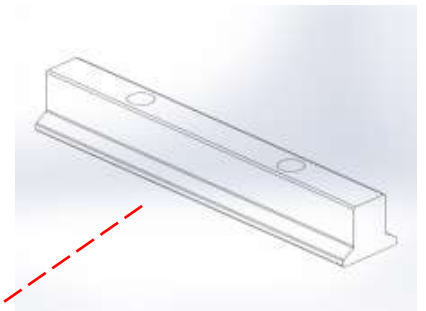
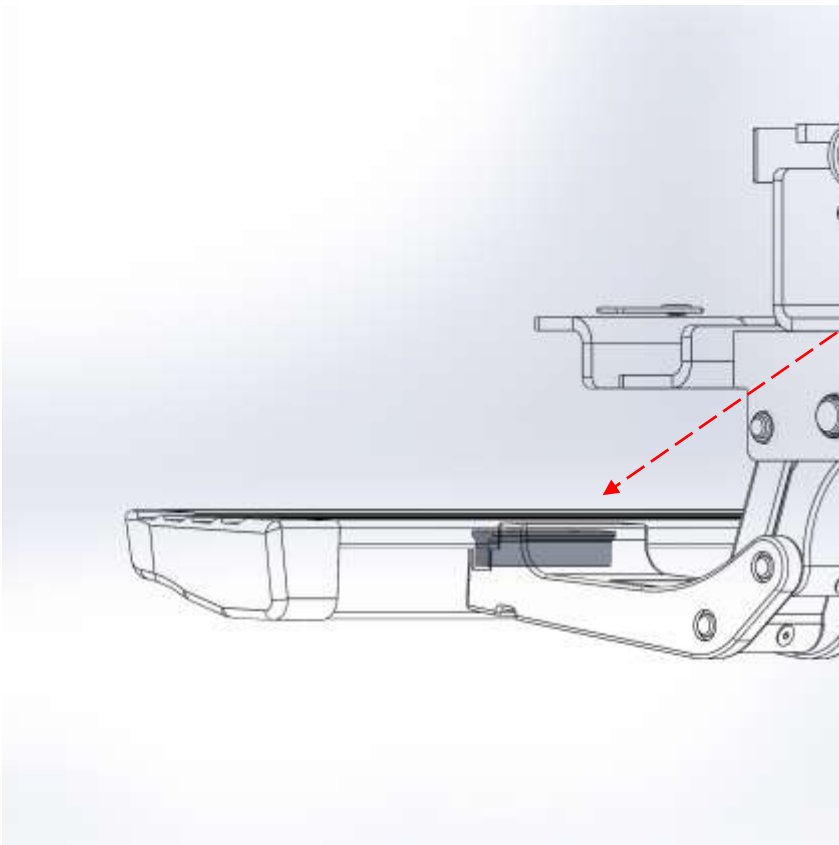
The rear carrier frame's rear connection bolt is seen on the left photo

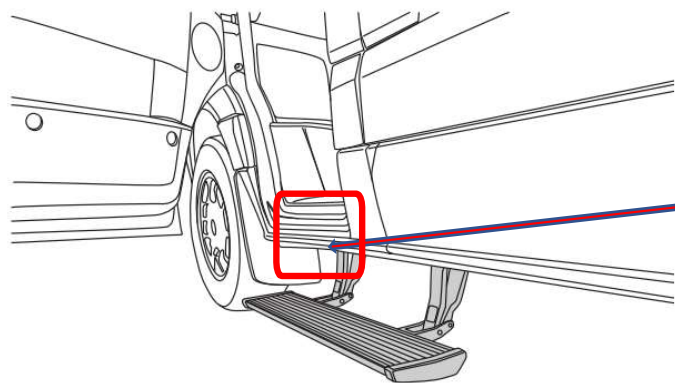
10



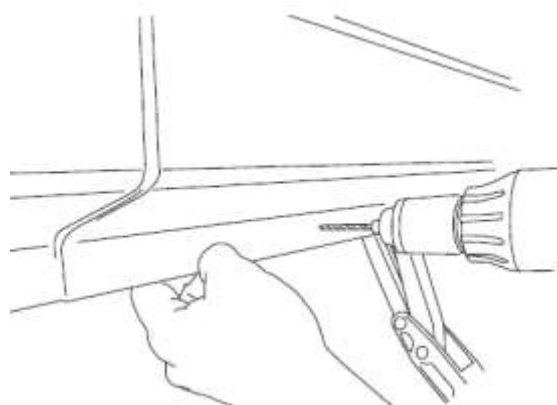


For the installation of carriers on the board, the board profile fittings are should be able to move through the board channel. The carrier chassis is shifted to the section where the installation will be made, and the board is mounted together with the carrier chassis.



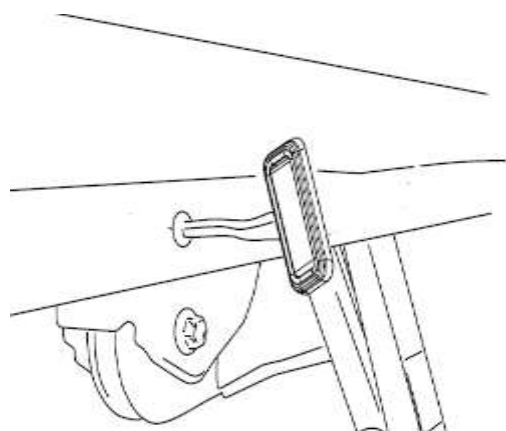


Points where LED installations will be made.

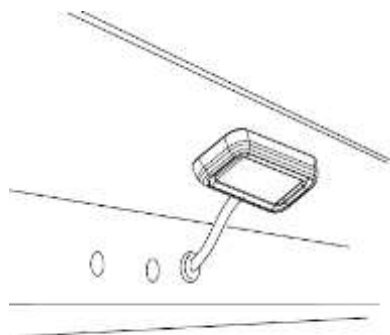


For the installation of LEDs, a hole of Ø10 mm is drilled with a drill near the connection point of the carrier.

1



LED cables are threaded through the drilled hole. 2



LED cable connections are made. The installation of the LED is completed.

3





When starting the installation, replace the fuse that removed from the installation. After replacing the fuse, check the operation of the v-board. (4)

Check v-board operation, opening & closing. When the door is opened, check that the LED light is lit



V-board Opening

When the doors are opened, the v-board will automatically open out and down.

V-board Closing

When the doors are closed, the v-board will automatically return to the closed position.

V-board Automatic Stop

The v-board will automatically stop when it encounters an object or obstacle during opening. Open or close the door so that the V-board can continue to operate normally.

Maintenance

In adverse conditions, noise may occur due to the stuck parts such as sawdust, mud, dirt and dust on the v-board. In this case, direct spraying should not be applied to the motors. Adjust v-boards manually. After washing, apply silicone spray lubricant to the hinge and pins. Do not apply silicone or preservatives to the working v-board surface..

Attention! Keep your hands and feet away when the V-board is on the move.

WARRANTY

The warranty written on the V-board "Veldo warranty certificate" is valid for 2 years from the start date. During product delivery, the customer is given a Veldo warranty certificate. Our customers are required to submit this document in order to benefit from warranty procedures. In order to benefit from the warranty procedures free of charge, the Customer must notify the defect to «Veldo Teknoloji Makine Üretim Sanayi ve Ticaret A.Ş.» authorized dealer / service or «Veldo Teknoloji Makine Üretim Sanayi ve Ticaret A.Ş.» in written form. «Veldo Teknoloji Makine Üretim Sanayi ve Ticaret A.Ş.» cannot be held responsible for malfunctions that are not notified in writing form. The customer accepts in advance the malfunction and the damages that may be caused by the malfunction. The warranty period of the product replaced during the warranty application is limited to the remaining warranty period of the purchased product. If it is determined that it is not possible to repair the fault with the report to be issued by «Veldo Teknoloji Makine Üretim Sanayi ve Ticaret A.Ş.» authorized dealer / service or «Veldo Teknoloji Makine Üretim Sanayi ve Ticaret A.Ş.», the replacement will be carried out free of charge. Improper handling (impact, drop, hit), incorrect and insufficient maintenance, improper and bad use, use of the products in excessively humid, dusty or hot environments or using in corrosive environments harmful to electronic circuits, accidents, electrical (voltage) changes, failures caused by natural disasters, wear and tear on the parts due to normal use and the nature of the material, product or the product's cable defects caused by damage by pests or animals are not covered by the warranty.

WARNING

Ensure that it is installed in accordance with the instructions given when installing the product and following it exactly. Failure to do so could put vehicle occupants in a potentially dangerous situation. After installing or reinserting, recheck the product to make sure it is working properly!!!!!!!!!!!!