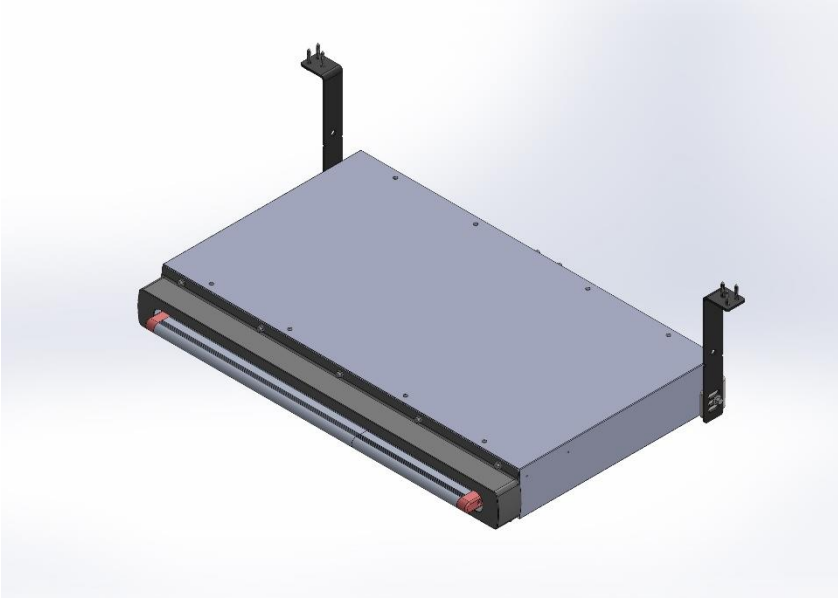




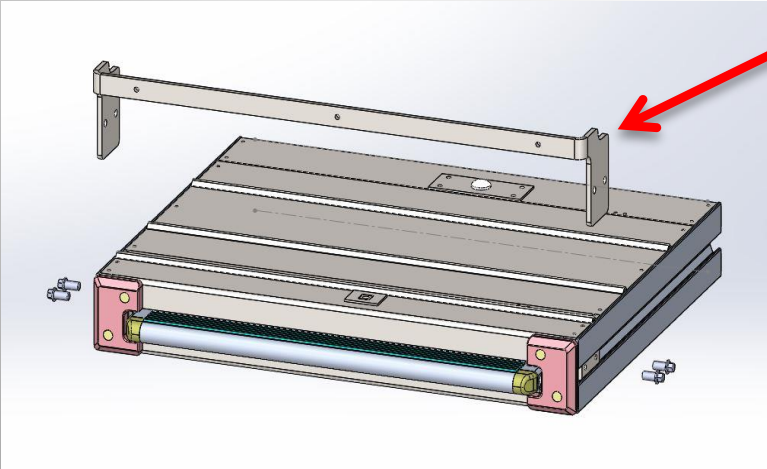
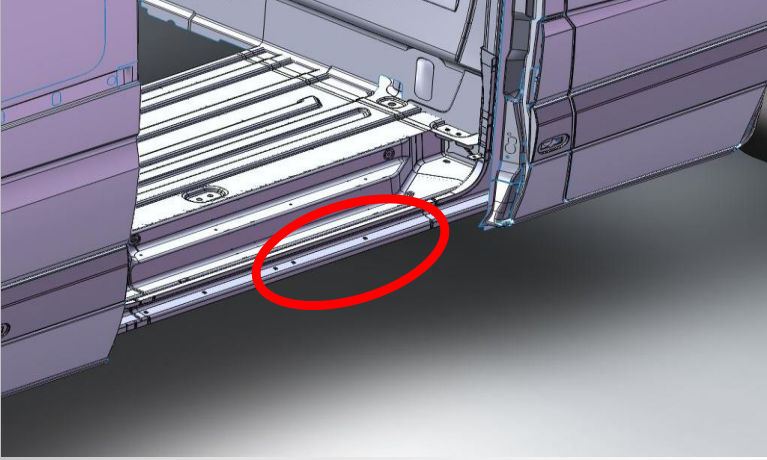
## **GOLD SERİSİ**



VELDO TEKNOLOJİ



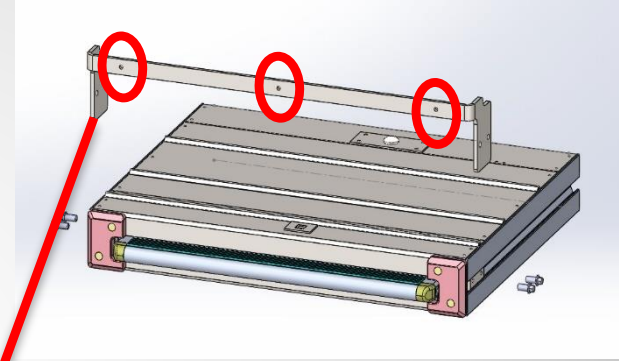
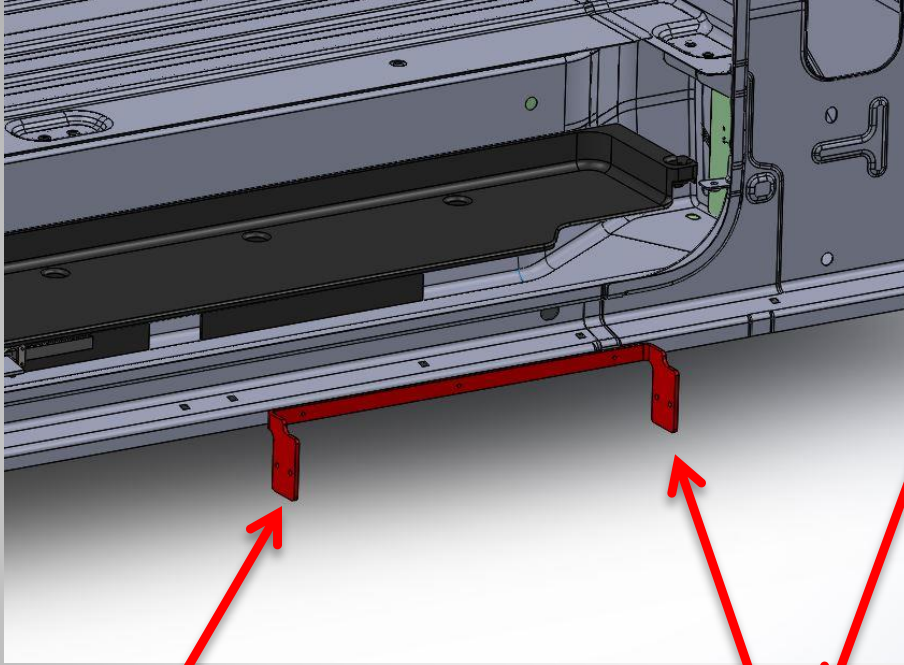
## BASAMAK MONTAJI



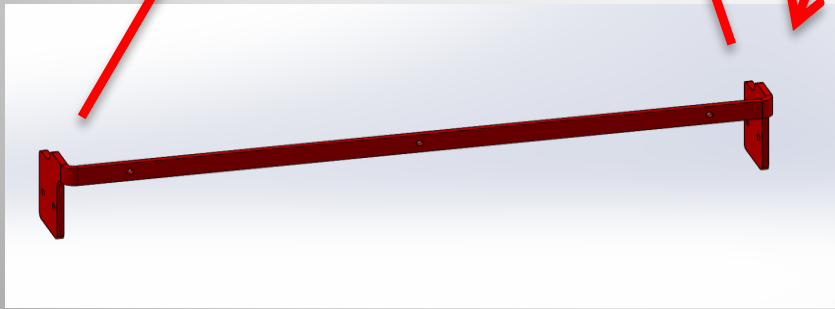
Basamak takılmak istenen bölgede delik yerlerinin işaretlenmesi için, basamak üzerinden ön bağlantı braketi ( şekilde olduğu gibi ) sökülür.



## BASAMAK MONTAJI

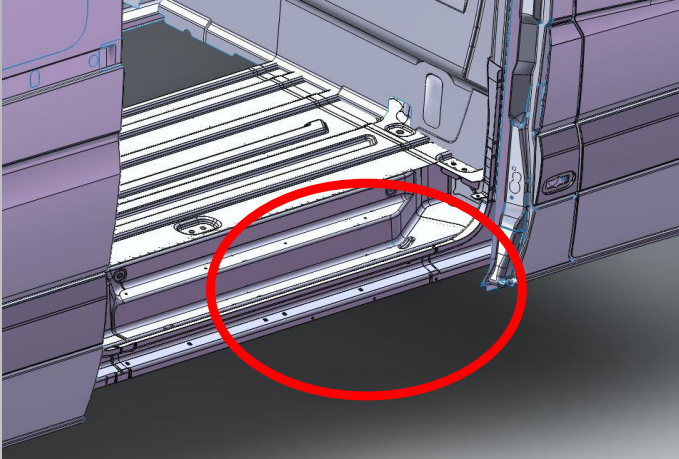


Sökülen ön bağlantı braketini üzerinde bulunan 3 adet delik, araç üzerinde basamak montajı yapılacak bölgeye yerleştirilerek delik yerleri işaretlenir.

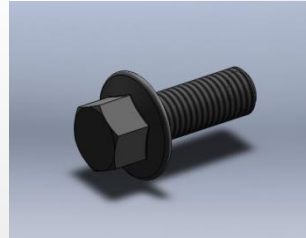
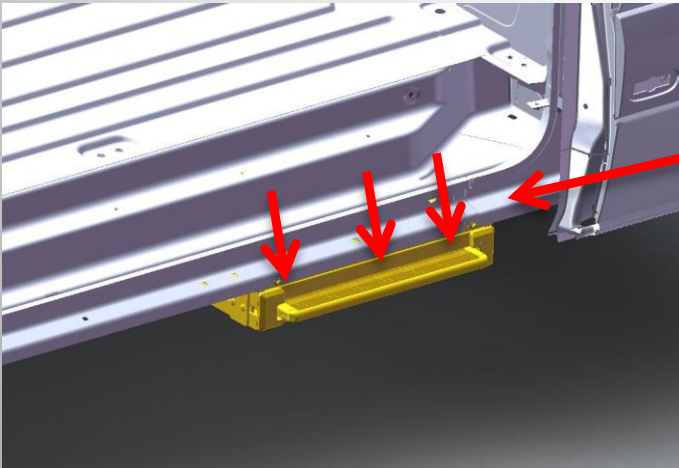




## BASAMAK MONTAJI



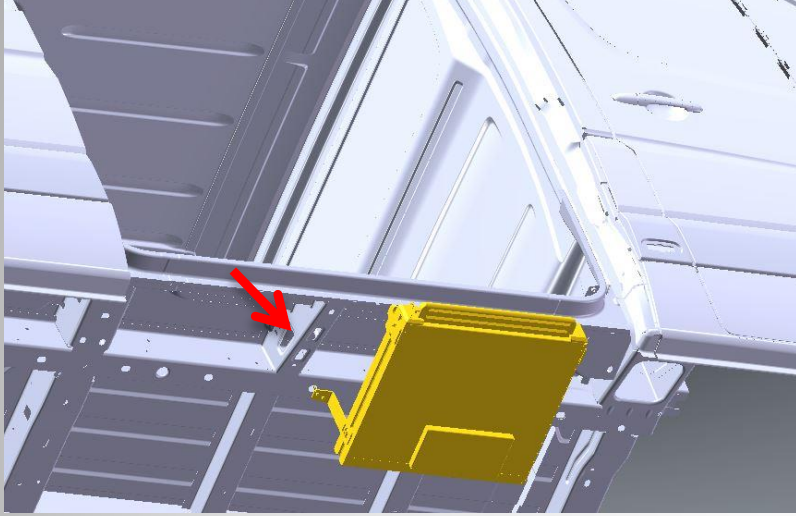
Delik yerleri  $\varnothing$  6.5 mm matkapla delinir.



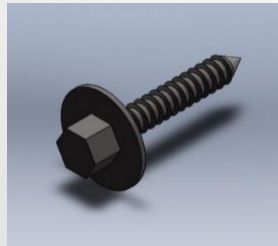
Altı köşebaşlı M6x20 cıvata ile montaj işlemi yapılır..



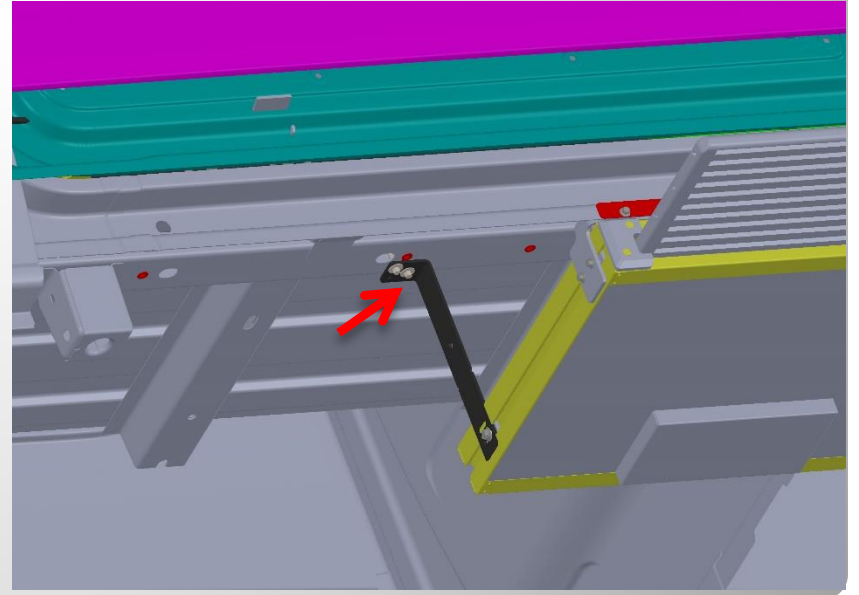
## BASAMAĞIN TAKILMIŞ HALİ (alt)



Basamak arka braketlerin montajı

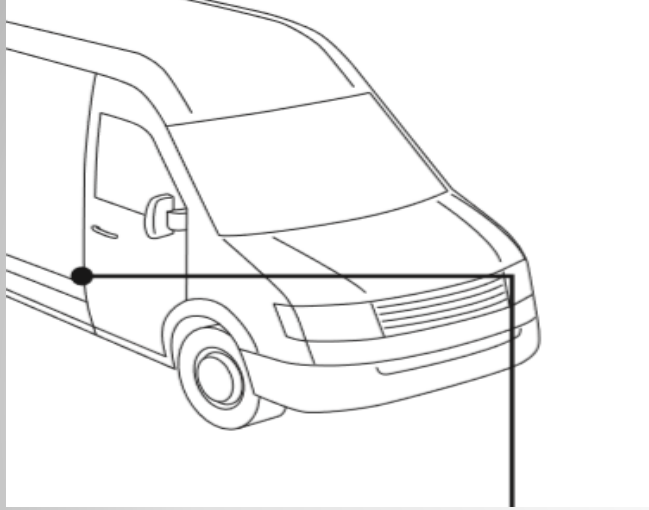


Trapez vida ile montajlama işlemi yapılır.





## BASAMAK ON - OFF SWİCHİ

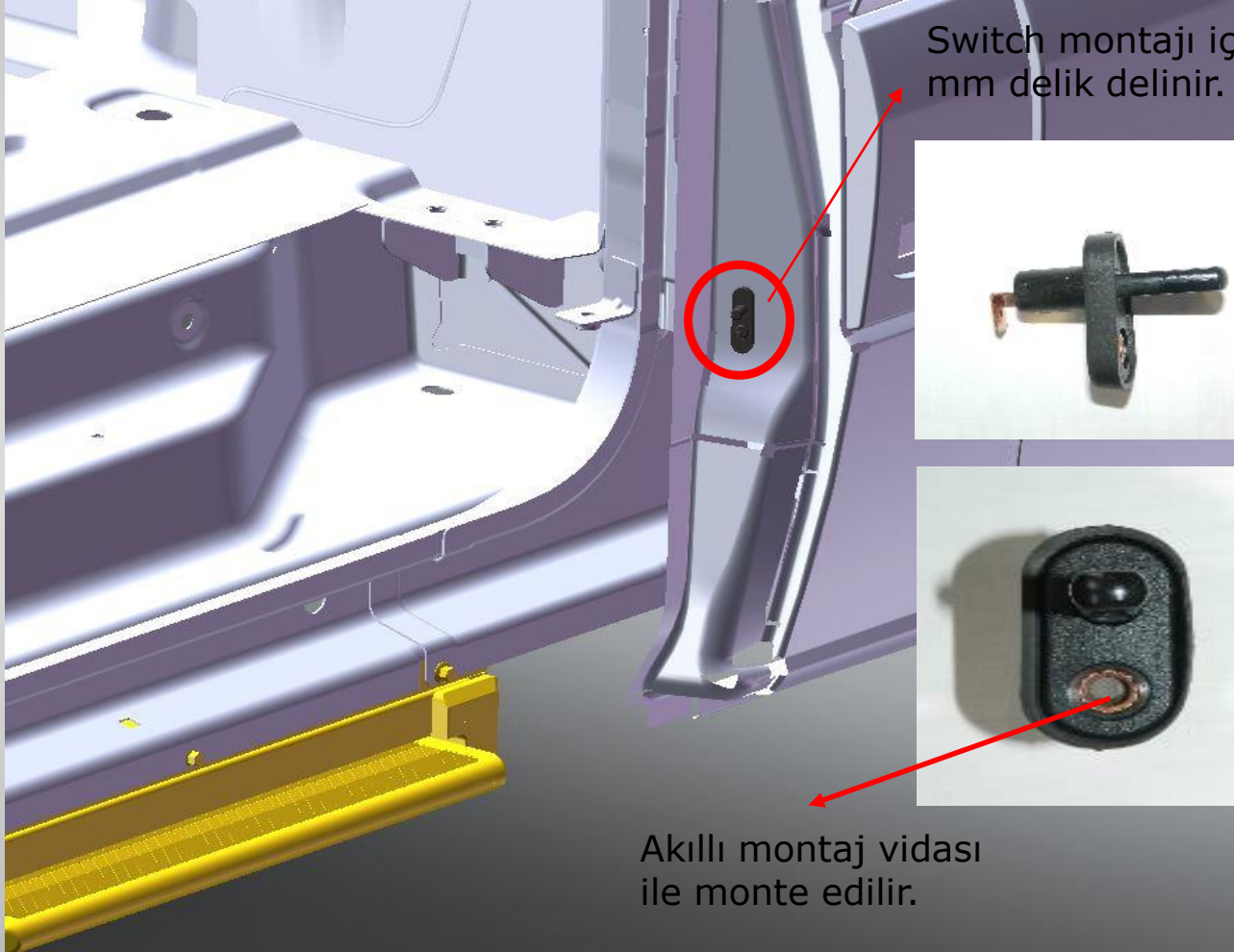


Basamak ON / OFF Swıch'i araç üzerinde  
şekilde görölen bölgeye montaj yapılır.





## BASAMAK ON-OFF SWİCİTİ

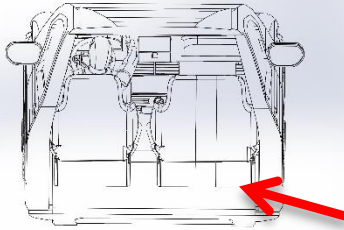


Switch montajı için Ø 11 mm delik delinir.

Akıllı montaj vidası ile monte edilir.



## BASAMAK TESİSATI ve KONTROL ÜNİTESİ

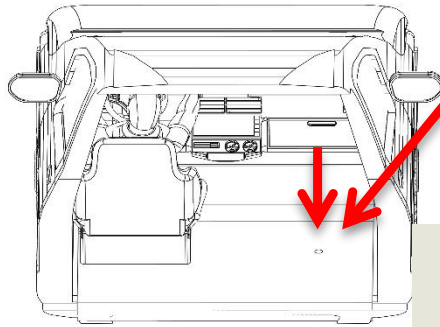


Basamak tesisatını araç içine alınabilmesi için ön yolcu koltuğunu altına  $\text{Ø}38\text{mm}$  bir delik delinmesi gerekmektedir.

**Not:** Bu delik bazı araçlarda orijinal olarak bulunmaktadır.

Araç ön sürücü koltuğu sökülür.

$\text{Ø}38\text{mm}$  punch ile sökülen ön yolcu koltuğunun altı delinir.



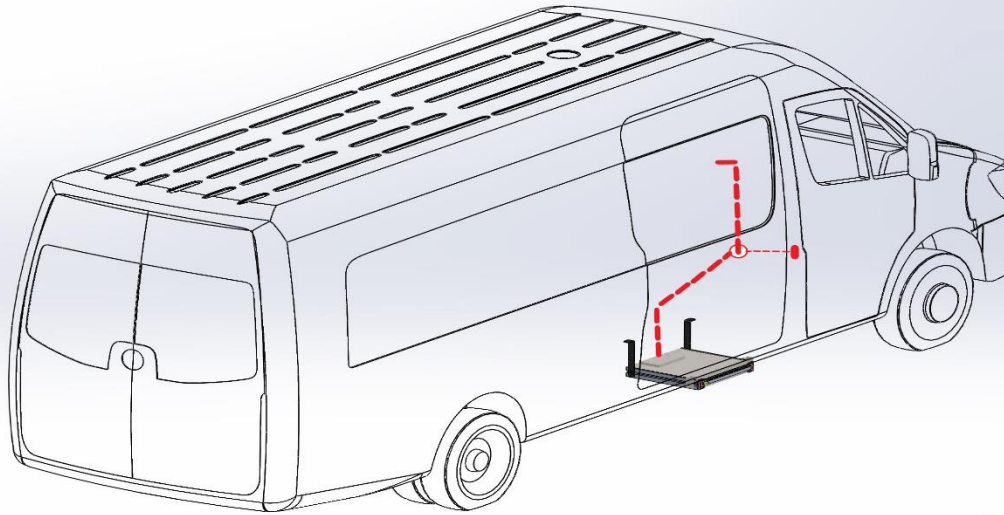
$\text{Ø}38$







## BASAMAK TESİSAT ve KONTROL ÜNİTESİ



Araç ön yolcu koltuğunu altına delinen Ø38mm delikten basamak tesisatı araç içine alınır.

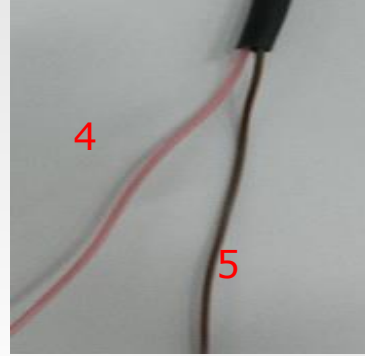
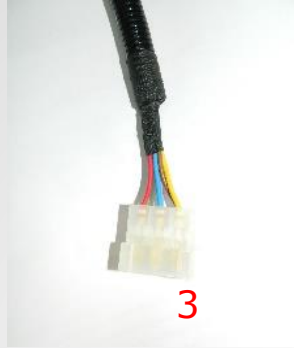


## KOMPLE BASAMAK SETİ





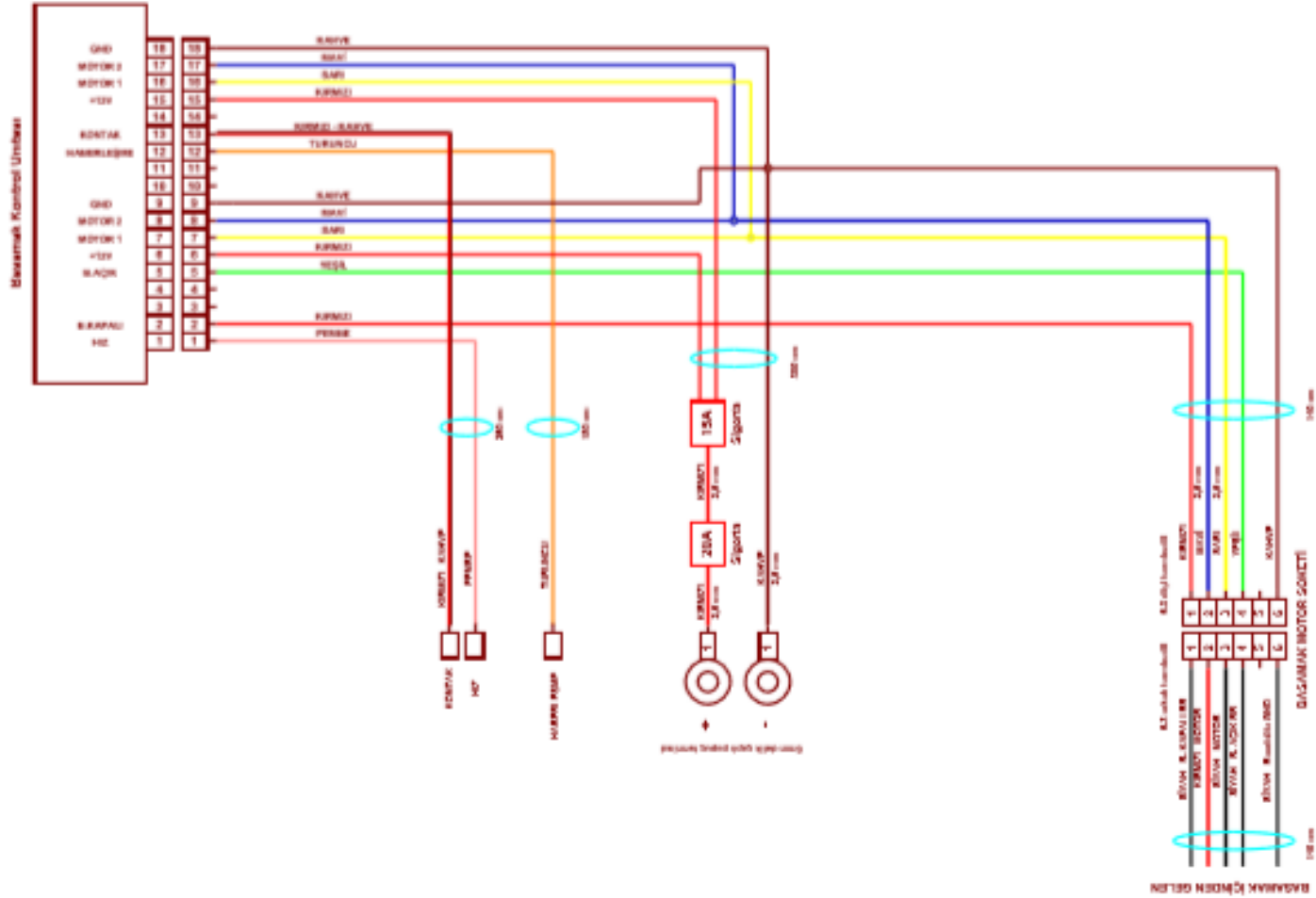
## BASAMAK TESİSAT ve KONTROL ÜNİTESİ



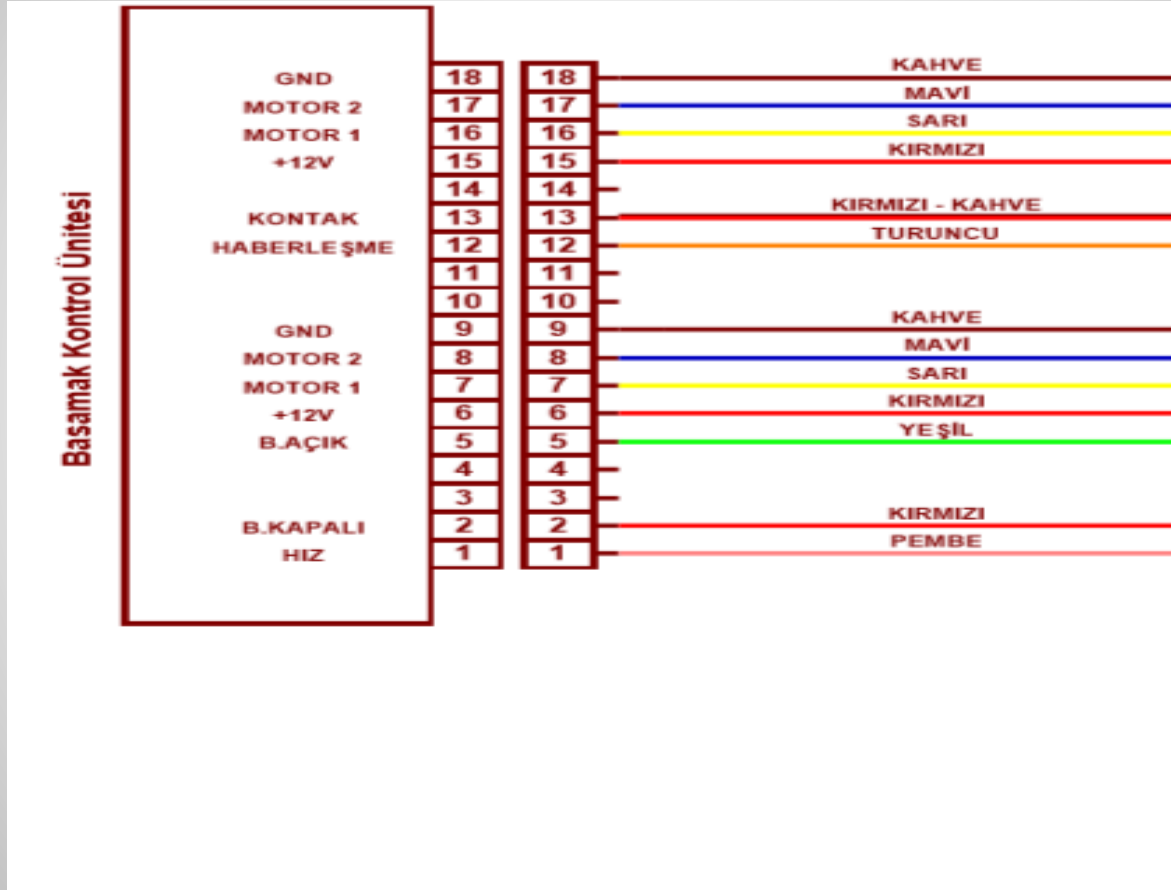
1. +12V besleme
2. -GND (şase)
3. Basamak soketi
4. Pembe: Km kablosu (Opsiyonel)
5. Kahverengi üzeri kırmızı: Kontak
6. Turuncu: Kapı swich kablosu
7. Basamak kontrol ünitesi



# BASAMAK ELEKTRİK TESİSATI

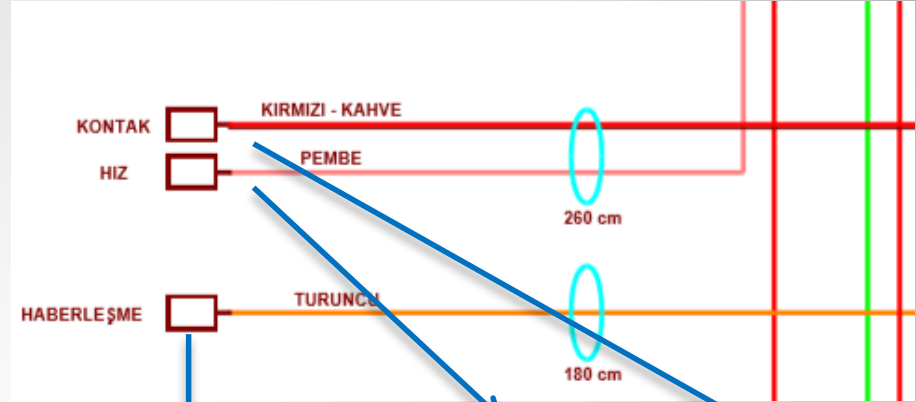
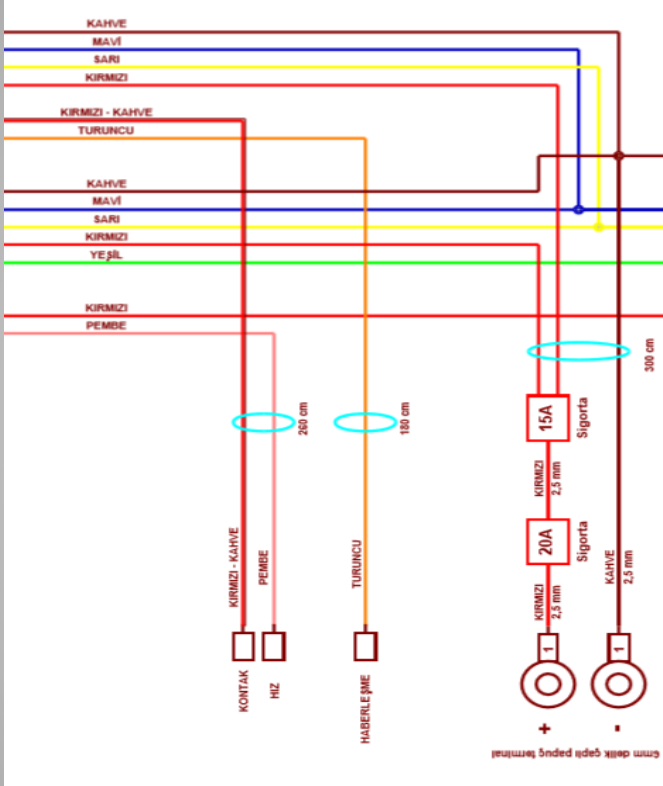


# BASAMAK ELEKTRİK TESİSATI

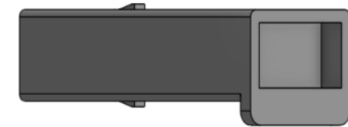
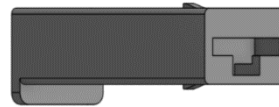




# BASAMAK ELEKTRİK TESİSATI



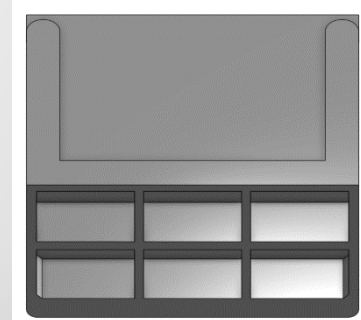
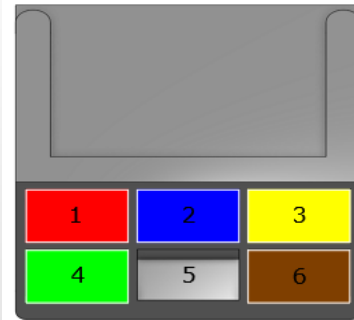
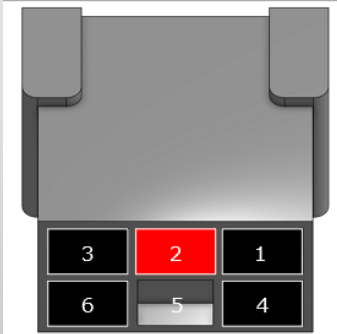
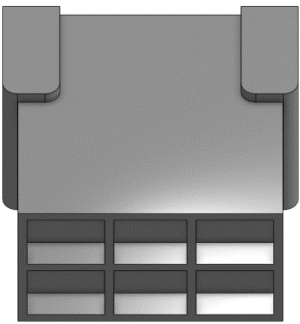
Kabloların renklerine uygun soket bağlantıları şekilde görüldüğü gibidir.





# BASAMAK ELEKTRİK TESİSATI

BASAMAK İÇİNDEN GELEN





## BASAMAK MONTAJININ TAMAMLANAN HALİ

